

# Modular Battery Charger MBC-SMT

## THE ONLY CHARGER NEEDED ON THE BATTLEFIELD

New electronic equipment usually means a new battery and a new charger introduced into the inventory, expanding your logistics footprint and costs. Tectonica has developed the world's first 'smart' Modular Battery Charger (MBC-SMT) that recharges your existing batteries and can be easily reconfigured to recharge new battery types.

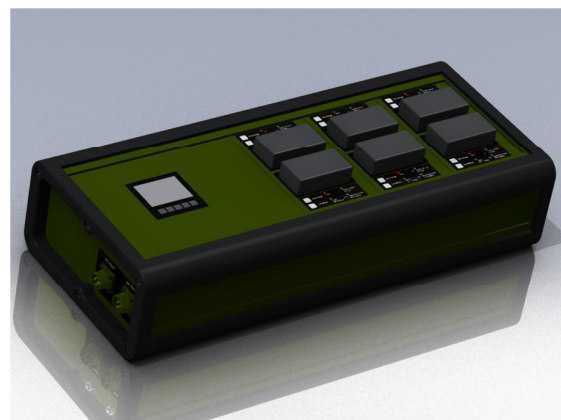
The MBC-SMT saves time and money and ensures that you keep pace with new technology. In the field, the MBC-SMT allows personnel to take a single charger to recharge all of their battery types. The charging unit can be deployed along with a range of modules to suit each type of battery in use, significantly reducing the weight and space required to deploy battery chargers.

With an innovative power scavenging capability the MBC-SMT can be used to store or transfer left over power in discarded batteries to new or different battery types.

Powering the charger is now easier than ever; the MBC-SMT is designed to be powered from mains electricity, vehicle auxiliary power outlets, military field generators, solar panels and UltraCell's innovative fuel cells.

## PRODUCT FEATURES

- Charge up to 6 different batteries simultaneously
- Battery conditioning
- Scavenge power from other batteries
- Transfer power between battery types
- Battery State-of-Health available
- Charge status per battery displayed
- Battery charge time provided
- Surge protection for safe operation
- Smart charging ensures optimal battery life
- Ruggedised for military use
- MIL-STD-461E and MIL-STD-1275 compliant



The MBC-SMT Power Manager fitted with a 6-bay module for charging PRC-117F Radio batteries



**INNOVATIVE MODULAR DESIGN, REDUCES WEIGHT & COST**

# MBC-SMT

## BATTERY MODULE TYPES

The MBC-SMT can charge any combination of the following batteries:

- **BB-2590/UBI-2590/UBI-2590 SMBus**
- **Li-145 and Li-80**
- **Li-7**
- **AA and AAA** (NiCad, NiMH and Li-ion)
- **USB powered devices** (4 x ports)

## POWER INPUTS

- **UltraCell Fuel Cell** 16.8v @ 55W
- **Solar Cells** 10-28vDC 10Amp max
- **DC Input** 12-28vDC 20Amp max
- **AC Input** 100-260vAC @ 400W

## SPECIFICATIONS

- **Operating Temp** -20°C to +55°C
- **Storage Temp** -20°C to +60°C
- **Dimensions**  
Power manager only:  
L 310mm x W 300mm x D 150mm  
Power manager with 3 modules attached:  
L 688mm x W 300mm x D 150mm